



2021 Congressional Art Competition Guidelines & Application

U.S. Congressman Guy Reschenthaler (PA-14)

Due: Monday, April 19, 2021 at 5 pm

General Guidelines

- The 2021 Congressional Art Competition is only open to high school students (9th – 12th grades).
- Each student is permitted to submit one piece of art. All artwork will be judged by an independent panel. Although high schools may serve multiple Congressional Districts, the winning student must be a resident of PA-14. Artwork must be created by a single student; no collaborations.
- Each entry must be an original in concept, design, and execution and may not violate any U.S. copyright laws.

Note: Any entry which has been reproduced from an existing photo (other than student's own), painting, graphic, advertisement or any other work produced by another person is a violation of the competition rules and **will not** be accepted. Must also be the original artwork, and not a scanned copy.

Permissible media includes:

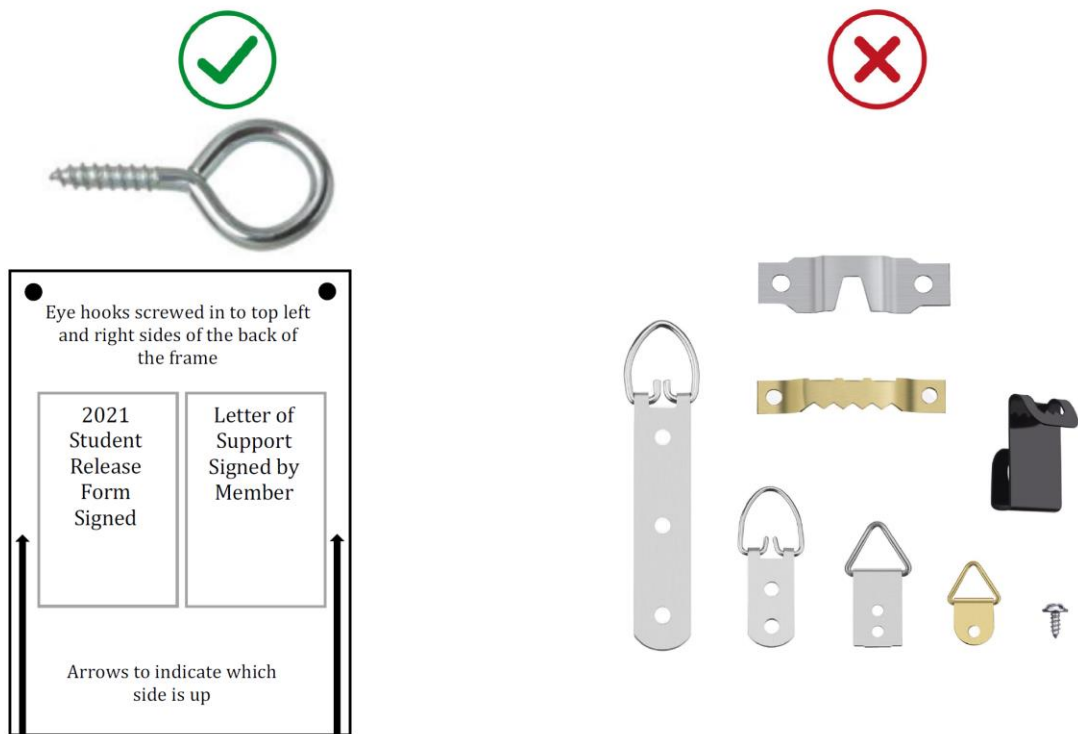
- Paintings: oil, acrylics, watercolor, etc.
- Drawings: pastels, colored pencil, pencil, charcoal, ink, markers
- Collage: must be two dimensional
- Prints: lithographs, silkscreen, block prints
- Mixed media: use of more than two mediums such as pencil, ink, etc.
- Computer generated art
- Photography

Guidelines for submitted artwork:

- Piece must be two-dimensional
- Artwork must be framed before submission, refer to Framing Guidelines section
- Each piece can be no larger than 26" (high) x 26" (wide) x 4" (deep), including frame.
- Artwork cannot weigh more than 15 lbs, including frame
- Remove all labels, ribbons, etc., before framing.
- Attach two sturdy eye hooks at the top right and left sides of the back of the frame. Wire removed from back of the frame.
- Draw arrows on the back of the artwork to indicate which direction is "up"

Framing Guidelines:

- All artwork must be framed before submission to the office
- When framed, the artwork can be no larger than 26 inches high, 26 inches wide, and 4 inches deep, including the frame.
- Frames must be made of wood or metal. No plastic “snap on” or metal frames that can easily come apart are to be used.
- All artwork, except paintings in oil or acrylic on canvas, must be protected by Plexiglas or glass. Plexiglas is preferred. If glass is used, special packing and shipping arrangements are encouraged to ensure that the work is not damaged if the glass breaks.
- Matting can enhance or detract from a work of art and should be carefully selected.
- The artwork will be hung from vertical wires. Two sturdy screw-in eye hooks (see picture below) must be attached at the top left and right sides of the back of the frame for hanging to prevent the work from leaning forward or hanging unevenly. Wire between the hooks will need to be removed before it is sent to Washington, DC.
- Do not attach labels, ribbons, etc., to the front of the piece or underneath the glass or Plexiglas.
- Please indicate which side is up by marking arrows pointing towards the top on the back.



Suitability Guidelines:

- Artwork must adhere to the policy of the House Office Building Commission. In accordance with this policy, exhibits depicting subjects of contemporary political controversy or a sensationalistic, gruesome, or violent nature are not allowed.

- It is necessary that all artwork be reviewed by the panel chaired by the Architect of the Capitol and any portions not in consonance with the Commission’s policy will be omitted from the exhibit.
- The final decision regarding suitability for exhibition in the Capitol is left to a panel of qualified persons chaired by the Architect of the Capitol. While it is not the intent to censor any artwork, we do wish to avoid artwork that is potentially inappropriate for display in the Capitol.

Release Form Requirements:

- The information requested on the first page of the form should be provided as thoroughly as possible. Students should include their mailing addresses, if they differ from their home addresses. Students should also include contact information that will be valid for several years.
- The form requires a description of the artwork, which should be detailed, clearly identifying the major elements of the work. For example, “self-portrait” or “a picture of two people” would be unacceptable, since many artworks would fit those descriptions. The following is an example of a useful description:
 - “A painting of two people; the person on the left wears a green sweater and khaki pants; the person on the right wears a black shirt and a striped skirt. A dog sits at their feet.”
- The second page of the Student Information and Release Form contains a legal release and a certification that the artwork is original in design and execution. The student, an art teacher, and a parent or guardian must sign where appropriate. Entries without signed originality certifications and artwork releases may not be accepted.
- A TYPED copy of the Student Information and Release Form, signed by the teacher, a parent or guardian, and the student, must be securely attached to the back of the artwork to certify the originality of the piece. Please retain a copy for your records.

Prizes:

- The Grand prize-winning artwork will hang in the Capitol for the entire year of the exhibition and cannot be returned to the student earlier. Students, therefore, should submit artwork they will not need for other purposes.
 - The Grand Prize Artist will also receive invitation to the national winners’ reception, more information to follow.
- The second-place artwork will hang in the Washington, DC, Office of Congressman Guy Reschenthaler for the entire year of the exhibition.
- Third and fourth place winner art pieces will hang in Congressman Reschenthaler’s district offices in Westmoreland and Washington County.